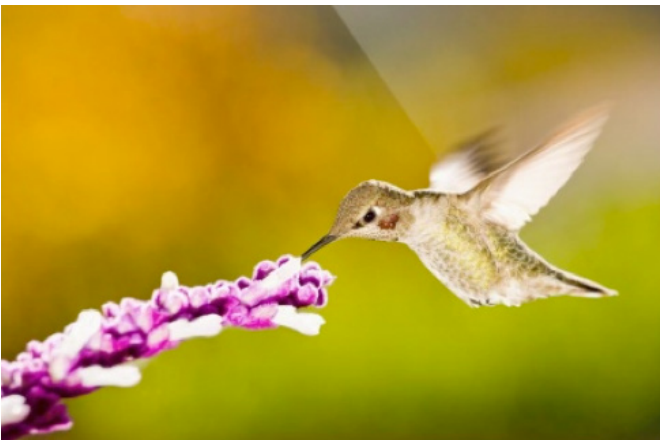


## Dignity Health Regional Design Standards - Arizona

Your ARCH Design art consultant will assist you with the selection of images according to the design standards set for your Dignity Health region. Artwork for women's health, pediatric areas and dining areas differs from artwork displayed in general spaces. The selection of imagery for each of the four categories is based on the criteria outlined below.

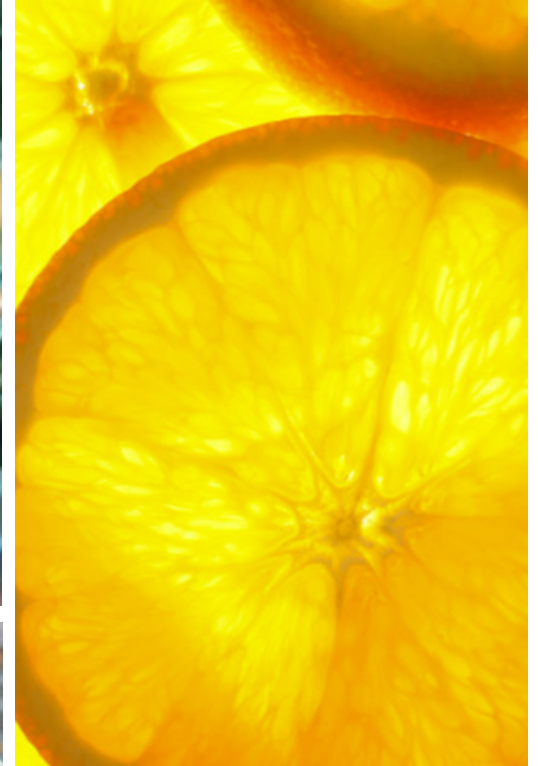
### Artwork for General Spaces - Arizona

Artwork displayed in general spaces should convey a sense of place, provide comfort and relieve stress for patients, visitors and staff. Imagery for general spaces may depict local scenery, wildlife and vegetation. Below are examples of appropriate images for general spaces in your region.



## Artwork for Dining Areas - Arizona

Dignity Health's "Kitchen Table" initiative supports healthier eating habits for patients, visitors and staff. In an effort to promote the movement, artwork in dining areas will reflect healthy, locally available food and/or scenes depicting local agriculture and farming. Below are examples of appropriate images for dining areas in your region.



## Artwork for Women's Health - Arizona

Women's health is one of the few areas in a medical facility where perfectly healthy patients come to receive routine care. Unfortunately, a number of women's health visits may not be surrounded by positive feelings and outcomes. It is important for the artwork in these spaces to be nature-based so that it may speak to patients experiencing all types of emotions. Appropriate imagery may include: florals, landscapes, calm water and baby animals. Below are examples of appropriate images for women's health areas in your region.



## Artwork for Pediatrics - Arizona

The artwork in pediatric areas should reflect the unique aspects of engaging with and caring for children in order to successfully aid in their healing process. Colorful, whimsical images of nature that suggest freedom, openness to exploration and discovery are ideal choices for pediatric areas. Acceptable imagery may include scenes of gardens, lakes, prairies, fields and forests. Below are examples of appropriate images for pediatric areas in your region.

